

The steering lock comprises the three main components:

- A. Ignition starting switch (electrical section)
- B. Locking cylinder
- C. Steering lock (mechanical section)

The ignition starting switch and the locking cylinder cannot be removed without removing the steering lock.

A. Removal and Installation of Ignition Starting Switch

Removal

- 1 Remove instrument cluster (combination instrument) („electrical installation“ 51.1).
- 2 Remove plug connection from ignition starting switch.
- 3 Unscrew fastening screws for ignition starting switch (7) from steering lock (1) with a short screwdriver and remove ignition starting switch (Fig. 1 and 2).

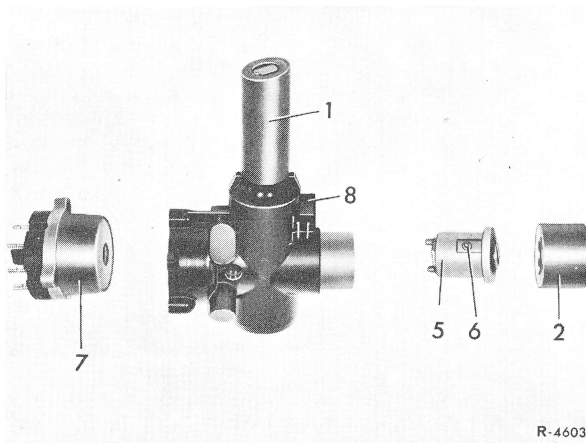


Fig. 1

Steering lock version 1

- | | |
|--------------------|-------------------------------------|
| 1 Steering lock | 7 Ignition starting switch |
| 2 Cover sleeve | 8 Contact switch (USA version only) |
| 5 Locking cylinder | |
| 6 Locking pin | |

Installation

- 4 Attach ignition starting switch to steering lock and mount plug connection.
- 5 Install instrument cluster („electrical installations“ 51.1).
- 6 Check ignition starting switch for function.

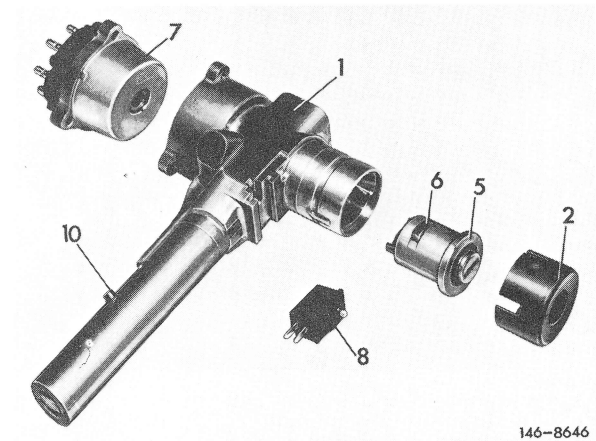


Fig. 2

Steering lock version 2

- | | |
|--------------------------|-------------------------------------|
| 1 Steering lock | 7 Ignition starting switch |
| 2 Cover sleeve (plastic) | 8 Contact switch (USA version only) |
| 5 Locking cylinder | 10 Locking pin |
| 6 Detent | |

46.1 Removal and Installation of Steering Lock

B. Removal and Installation of Steering Lock

Steering Lock Version 1 (Chrome-plated Cap)

Note

Legal regulations require that key can be pulled off only in position „0“.

Removal

- 1 Turn key to position „1“ the so-called assembly or radio position.
- 2 Lift cover sleeve (2) up to bottom edge of key. If required, pull cover sleeve out of steering lock up to bottom edge of key by means of a steel wire (4) 1 mm thick. Introduce pulling hook between rosette (3) and cover sleeve into groove (10) (Fig. 3 and 4).

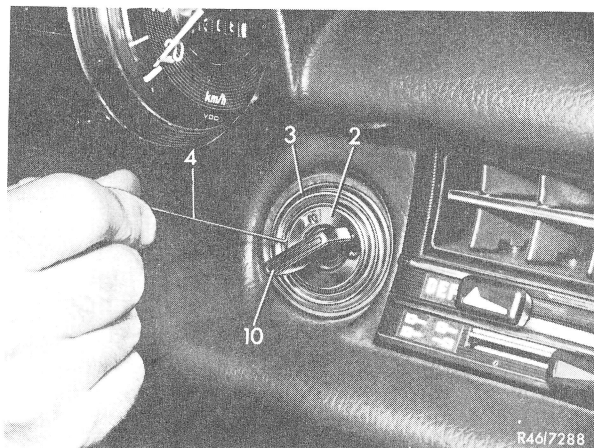


Fig. 3

- | | |
|----------------|--------------------|
| 2 Cover sleeve | 4 Steel wire |
| 3 Rosette | 5 Locking cylinder |

- 3 Turn key to position „0“ and remove together with cover sleeve.

- 4 Put key back into locking cylinder and turn to position „1“ (90° to the right). Push-in locking pin (6) and remove locking cylinder (5) (Fig. 5).

Note: The locking pin is at the right and can be pushed down into position „1“ only.

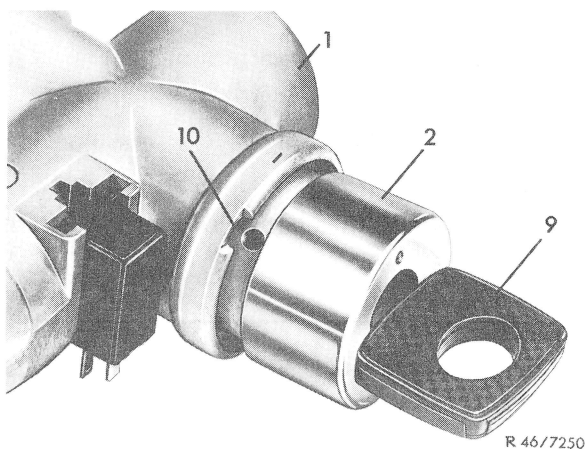


Fig. 4

- | | |
|-----------------|----------------------------------|
| 1 Steering lock | 9 Key |
| 2 Cover sleeve | 10 Slot for lifting cover sleeve |

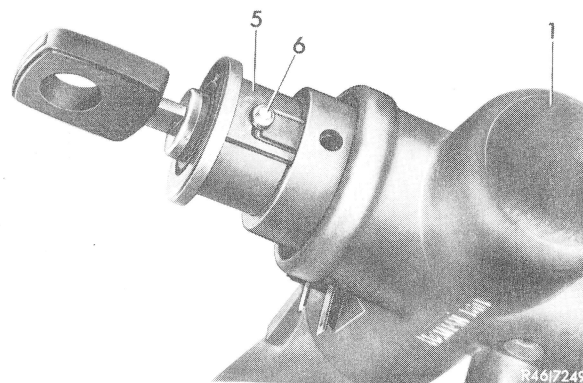


Fig. 5

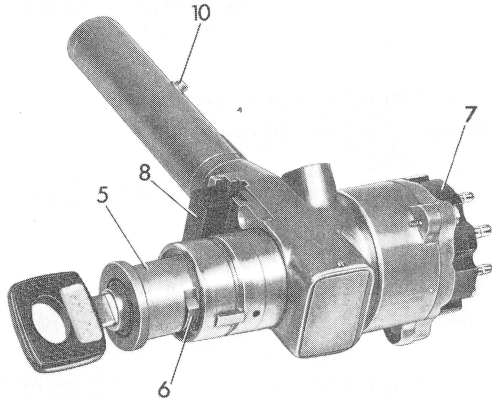
- | | |
|--------------------|---------------|
| 1 Steering lock | 6 Locking pin |
| 5 Locking cylinder | |

Installation

- 5 Turn locking cylinder to position „1“ and insert into steering lock, making sure that locking pin engages (Fig. 5).
- 6 Turn key to position „0“ and pull out.
- 7 Place cover sleeve of steering lock, insert key and turn to position „1“. Push cover sleeve completely down (Fig. 4).
- 8 Check locking cylinder for function.

Steering Lock Version 2 (Cap Made of Grey Plastics)**Removal**

- 1 Pull off key and remove cover sleeve from steering lock with a steel wire 1 mm thick.



146-8645

Fig. 6

- | | |
|----------------------------|-------------------------------------|
| 5 Locking cylinder | 8 Contact switch (USA version only) |
| 6 Detent | |
| 7 Ignition starting switch | 10 Locking pin |

- 2 Put key back into locking cylinder and turn to position „a“ (90° to the right). Push-in detent and remove locking cylinder.

Note: Detent is on the right and can be pushed-in only in position „1“.

Installation

- 3 Turn locking cylinder to position „1“ and insert into steering lock, making sure that detent engages.
- 4 Turn key to „0“ and pull off.
- 5 Attach cover sleeve in correct position to steering lock.
- 6 Check locking cylinder for function.

C. Complete Removal and Installation of Steering Lock**Removal**

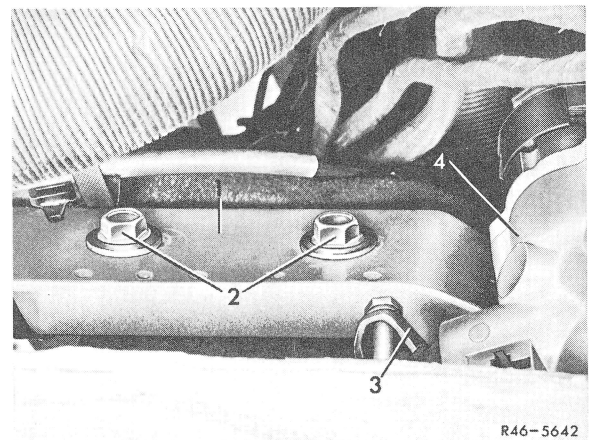
- 1 Disconnect grounding cable on battery.
- 2 Remove instrument cluster (combination instrument).
- 3 Remove plug connection on ignition starting switch of steering lock.
- 4 Remove cover sleeve of steering lock (refer to section B).

Note: Cover sleeve must be removed to turn steering lock while continuing disassembly.

- 5 Put key back and turn steering spindle so that locking bolt cannot enter locking ring of steering spindle, then pull off ignition key.

- 6 On USA vehicles, pull plug connection from contact switch for warning buzzer.

Note: On USA vehicles, the contact switch for warning buzzer may be removed and installed only in position „a“ of so-called assembly or radio position, with steering lock removed. For this purpose, pull switch out of receiving slot of steering lock.



R46-5642

Fig. 2

- | | |
|------------------|------------------|
| 1 Cross member | 3 Fastening clip |
| 2 Locking screws | 4 Steering lock |

46.1 Removal and Installation of Steering Lock

7 Loosen clamping screw on fastening clip (3) (Fig. 2).

8 Push locking pin (7) for steering lock (6) inwards with a punch approx. 5 mm thick (refer to arrow in Fig. 3). Turn steering lock and remove out of holder (8) of jacket tube and instrument panel, making sure that rosette is not damaged (Fig. 3).

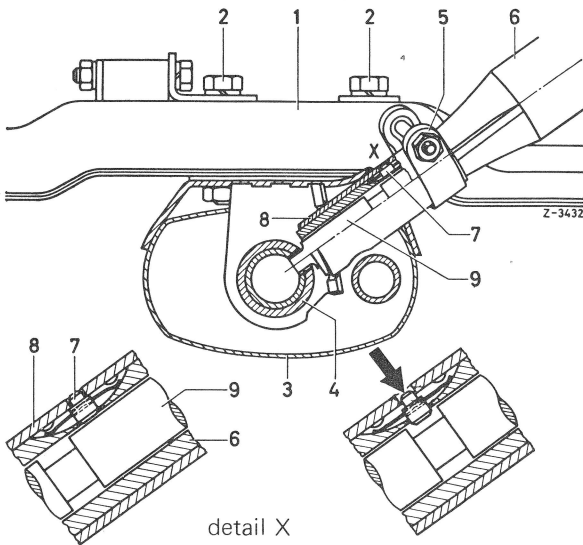


Fig. 3

- | | |
|--------------------|----------------------------|
| 1 Cross member | 6 Steering lock |
| 2 Hex. screw | 7 Locking pin |
| 3 Jacket tube | 8 Holder for steering lock |
| 4 Steering spindle | 9 Locking bolt |
| 5 Fastening clip | |

Caution! Locking pin can be pushed-in only in position „1“ of steering lock. Pin represents an additional protection against burglars.

Installation

9 Insert steering lock in position „1“ into holder of jacket tube while pushing locking pin inwards. Make sure that locking pin enters bore of holder (8) (Fig. 3).

10 Tighten clamping screw of fastening clip (3) (Fig. 2).

11 On USA vehicles with steering lock version 2, connect plug connection to contact switch.

12 Attach plug connection to ignition starting switch.

13 Push cover sleeve in position „1“ on steering lock (refer to section B).

14 Install instrument cluster (combination instrument).

15 Connect grounding cable to battery.

16 Check function of steering lock.